

**Land for Sale**

Punta Rubia y Santa Isabel de la Pedrera, Rocha



---

**Sale: US\$ 63,000**

---

**Property type: Land**

**Operation: Sale**

- 
- **Land:** 315.0 sqm
  - **Land:** regular

---

**Property status**

Age:

Without Mortgage: Yes

---

## Description

Land for sale in Punta Rubia a few meters from the beach

Punta Rubia is located at km 230 of Route 10, a sparsely populated, wild resort with sparse vegetation. It limits to the southwest with the La Pedrera spa and to the northeast with Santa Isabel de la Pedrera. It is a unique place that invites you to enjoy nature and total rest.

Located a block and a half from the beach, the area has a natural charm due to the presence of rock formations that are among the oldest in the world, these added to an indigenous forest providing a particular look and rugged charm.

It is a lot of land in Punta Rubia, the standards are the following: standard number 619 of 315mts2 located in Chafarote street, standard number 2316 of 316mts2 located on Uruguay street and the last standard number 2317 of 315mts2 located in Coronilla street.

In its entirety it achieves almost 1000 mts2.

Permitted uses: The residential use of isolated units or tourist complexes, hotels, apart-hotels or hostels and restaurants and related services, compatible with residential use, is authorized.

Documentation up to date soon to transfer.

We have different options and availability in the area!

Real Estate Commission 3% + IVA.

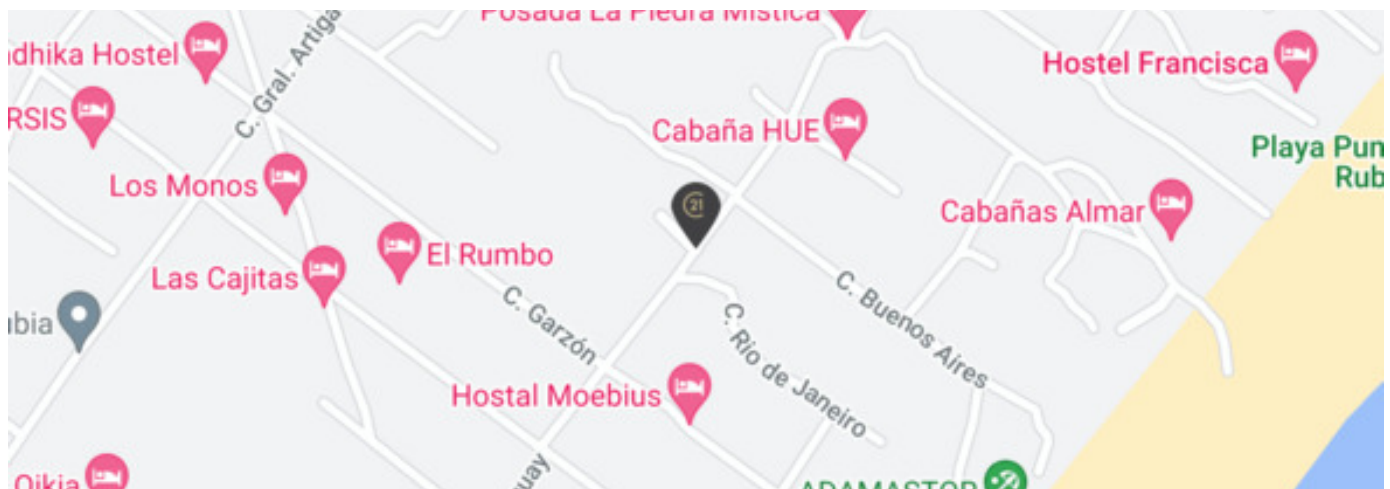
Do not miss this opportunity, consult and schedule your visit!

---

## Location

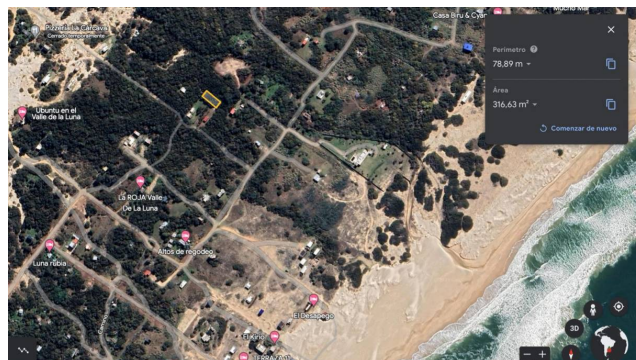
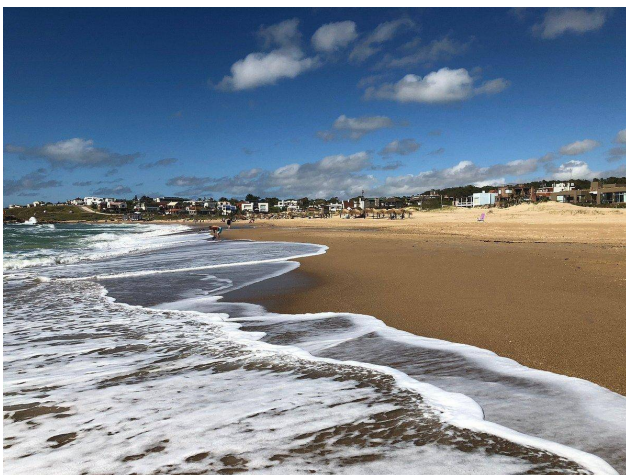
, Punta Rubia y Santa Isabel de la Pedrera, Rocha

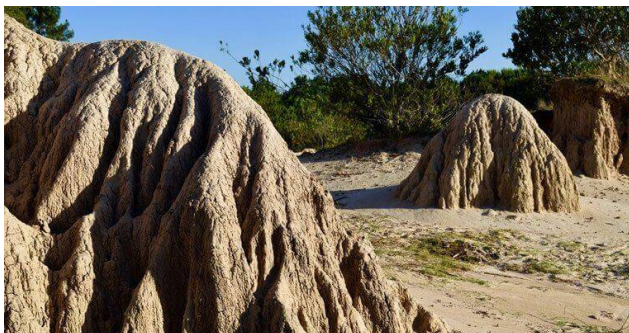
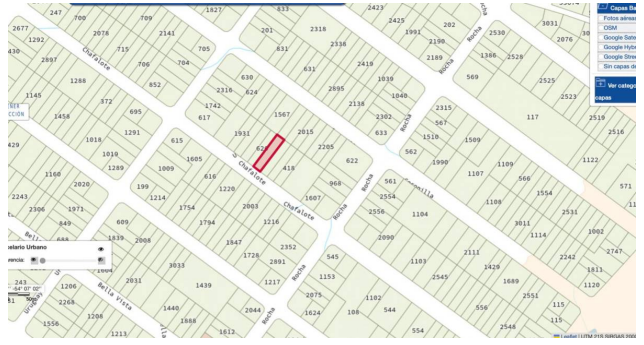
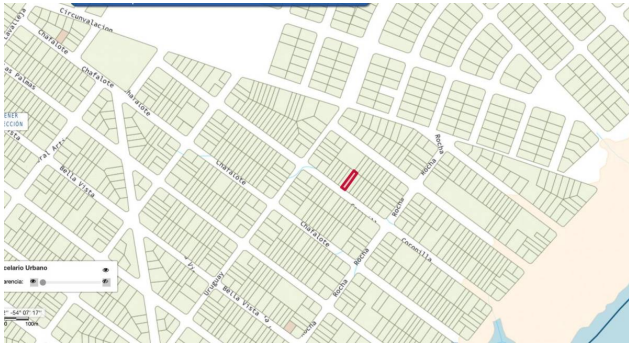
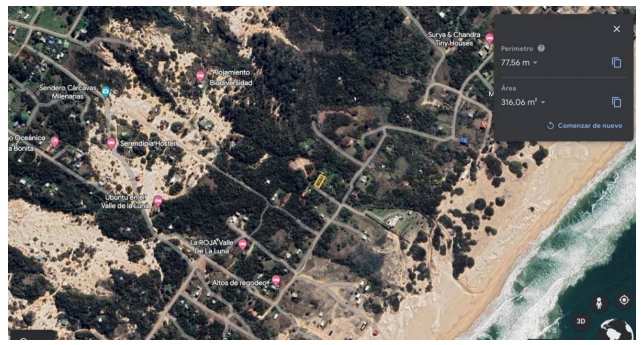
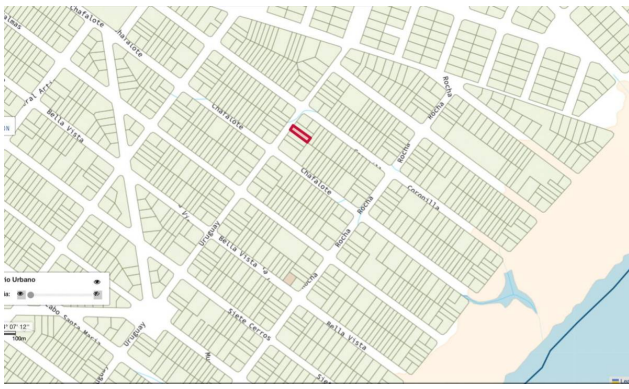
## References



---

## Photo Catalog





**FORUM - Av. Prof. Dr. Euclides Peluffo 1649 GSS104, Buceo, Montevideo**  
**T 099170152 | [contacto@c21alpha.com.uy](mailto:contacto@c21alpha.com.uy) | <https://c21alpha.com.uy>**

Property subject to availability.

Price subject to change without notice.

The sending of this file does not commit the parties to the subscription of any legal document. The information and measurements are approximate and must be confirmed with the relevant documentation.