



Camila Oyhenart

CENTURY 21.

Alpha

ID: 5481
coyhenart@c21alpha.com.uy
+59899836873



Offices for Rent

Ciudad Vieja, Montevideo



Rent: US\$ 1,981

Maintenance : 11,005

Property type: Offices

Operation: Rent

- **Land:** 125.0 sqm
- **Building:** 125.0 sqm
- **Bathrooms:** 3
- **Stories:** 11

- **Condition:** New
- **Number of Elevators:** 1
- **Floor number:** 4
- **Number Of Houses:** 11

Property status

State: New

Age: 2022

Without Mortgage: Yes

Description

Office in a large part of the Old City.

Located in a great point of the city with excellent connectivity and traffic on Ciudadela streets, a few meters from the executive presidential tower and a few blocks from the Solis Theater and the Rambla.

The office is located on the fourth floor with 125 m2 covered, all on one floor with an open and integrated concept. It also has 3 individual bathrooms.

The building was built in 2022 with a contemporary design, without giving up functionality in an area that is constantly growing. It has 74 apartments with 1 to 3 bedrooms and incredible amenities such as sky bar, in and out pool, gym, sauna and more.

Ask about other options in the same building and/or in buildings in the area.

Common expenses: \$20,186

Rental contract: minimum 5 years.

Accepted guarantees: Porto Seguros or SURA.

Don't hesitate to visit it!

Real estate fees 1 month rent+VAT

Location

, Ciudad Vieja, Montevideo

References

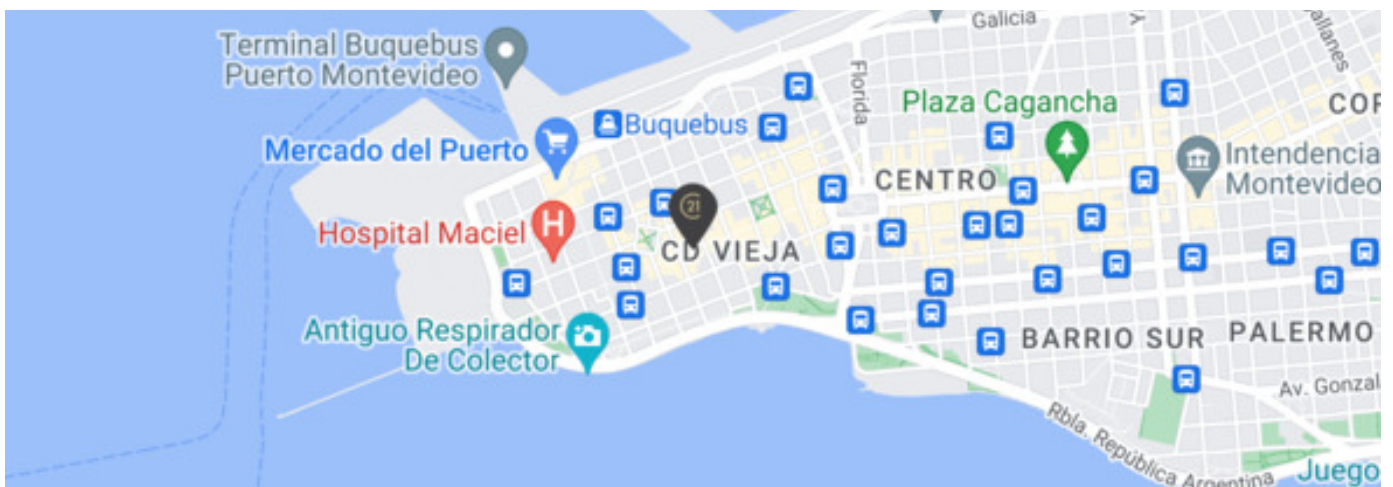
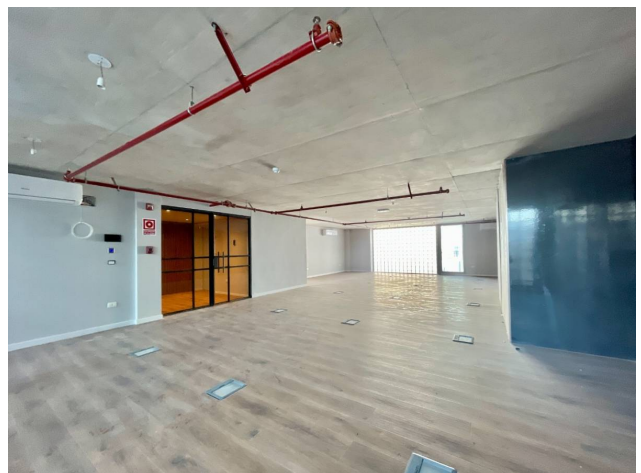
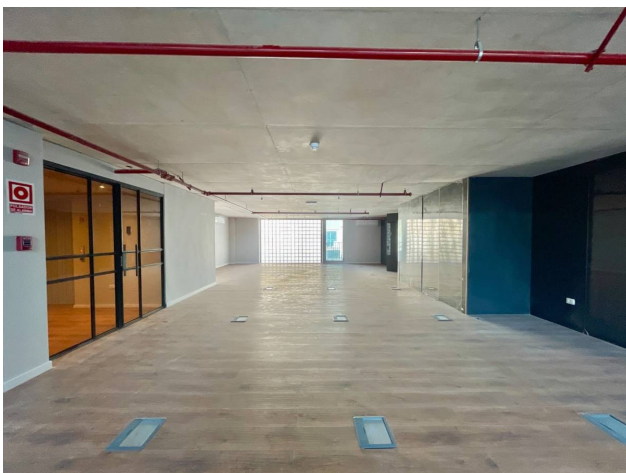
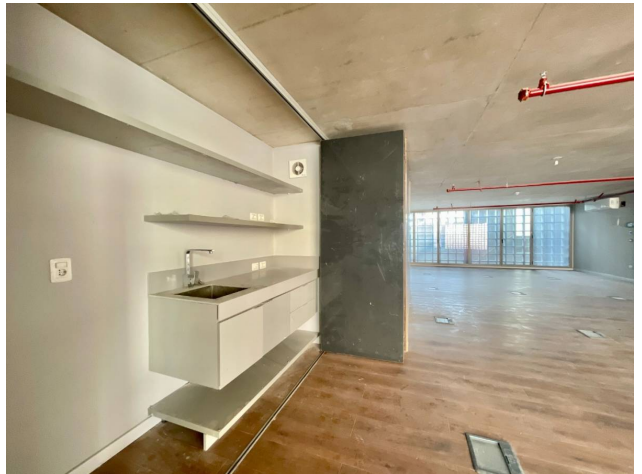
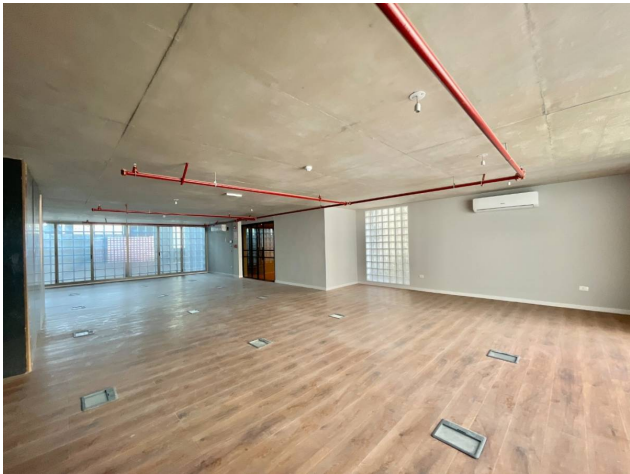
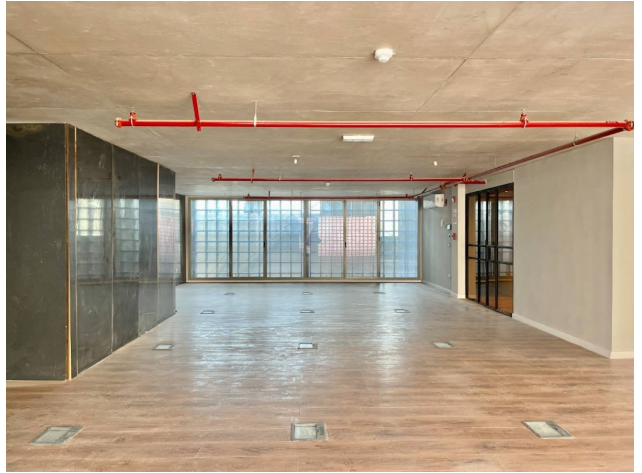
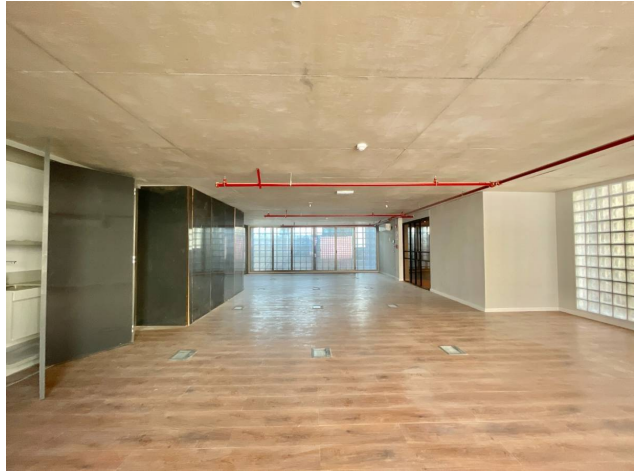
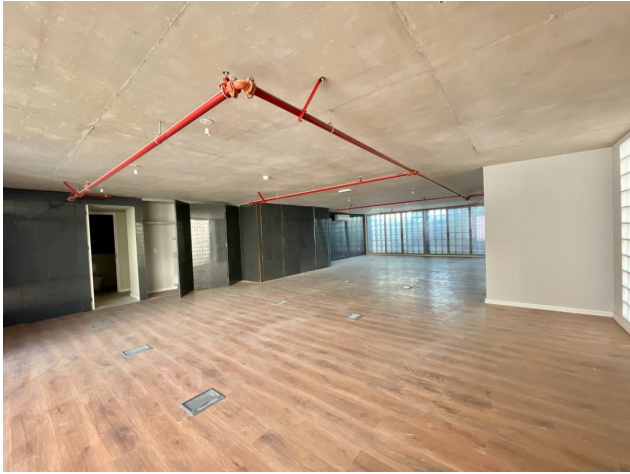
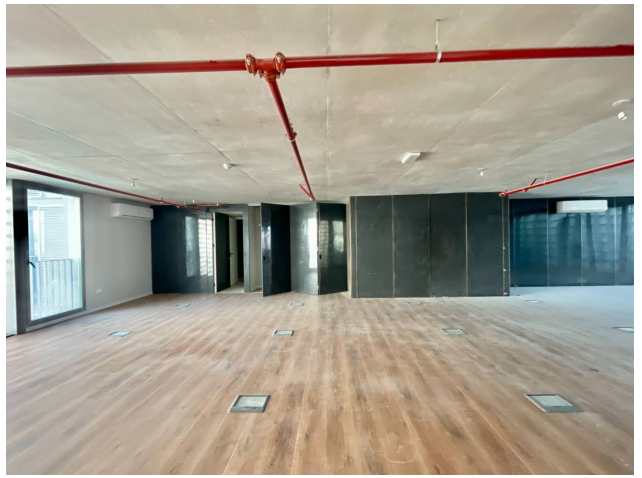
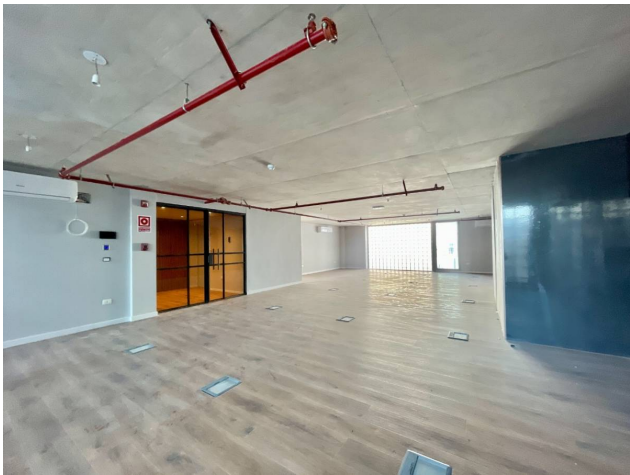
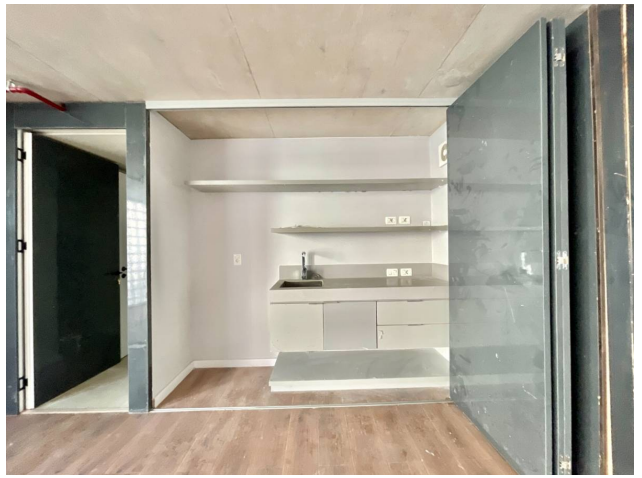
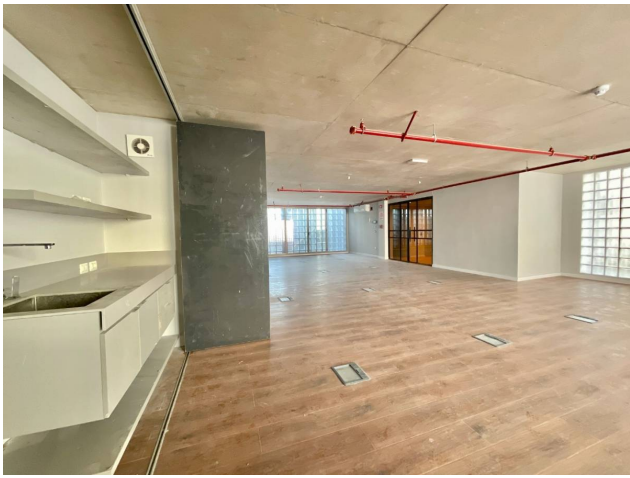
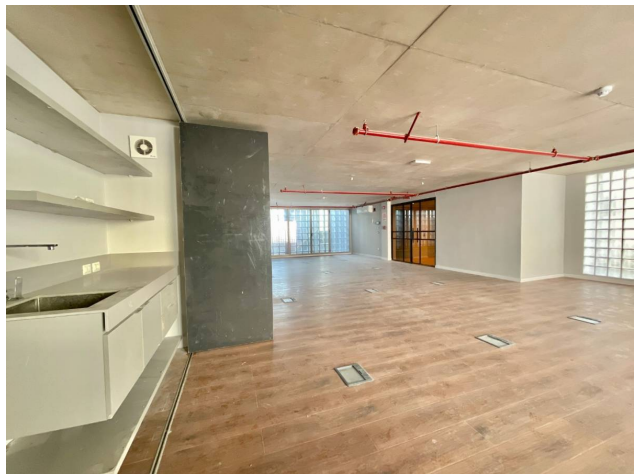
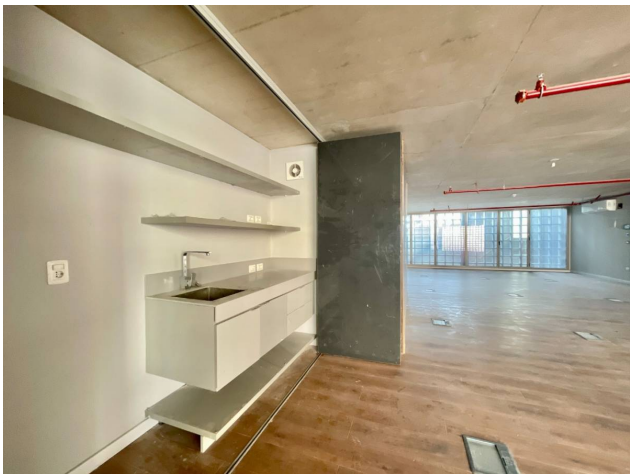
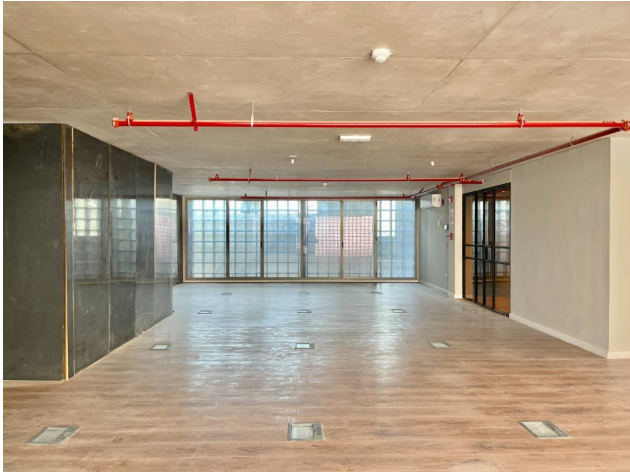
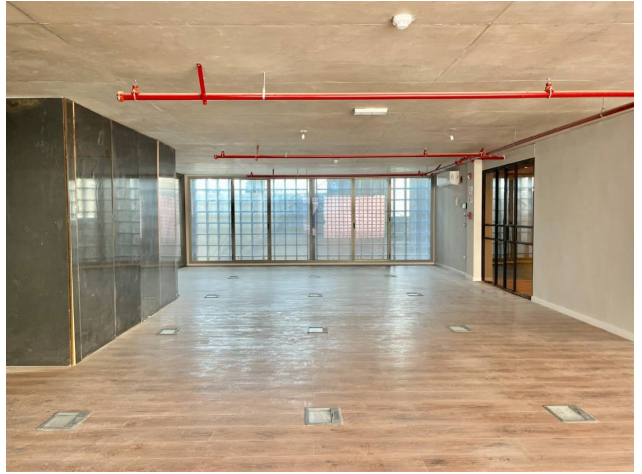
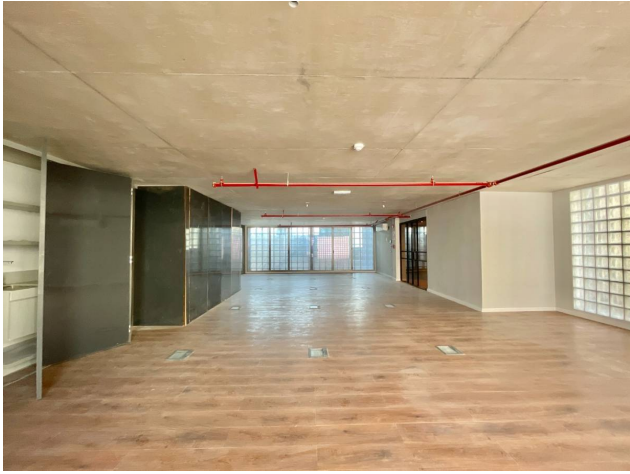
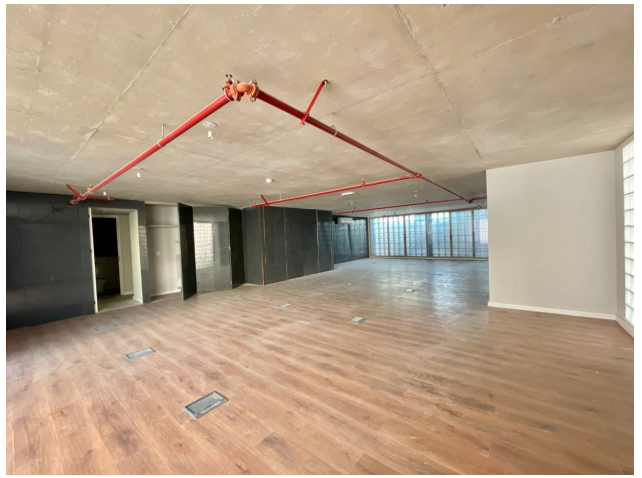
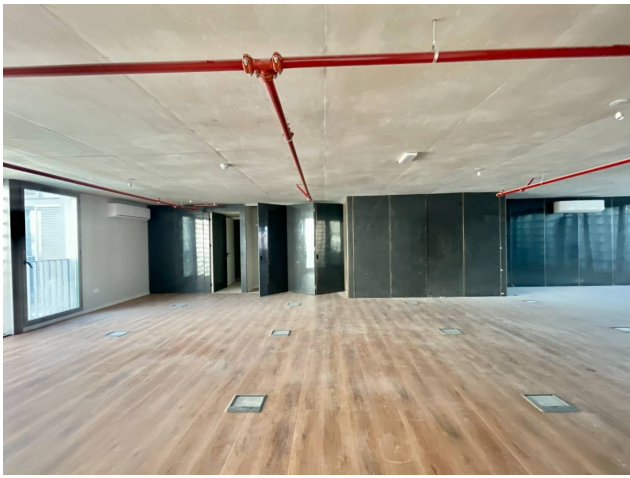


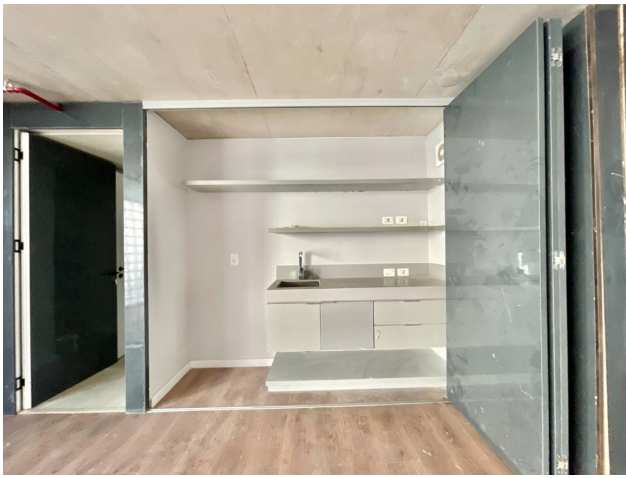
Photo Catalog











FORUM - Av. Prof. Dr. Euclides Peluffo 1649 GSS104, Buceo, Montevideo
T 099170152 | contacto@c21alpha.com.uy | <https://c21alpha.com.uy>

Property subject to availability.

Price subject to change without notice.

The sending of this file does not commit the parties to the subscription of any legal document. The information and measurements are approximate and must be confirmed with the relevant documentation.