



María José Rossi  
Iglesias

CENTURY 21.

Alpha

ID: 5602  
mjrossi@c21alpha.com.uy  
+59892082535



### House for Sale

El Jilguero 2644 Paso de la Arena, Montevideo



---

**Sale: US\$ 85,000**

---

**Property type: Home**

**Operation: Sale**

- **Land:** 500.0 sqm
- **Building:** 167.0 sqm
- **Bedrooms:** 2
- **Bathrooms:** 1

- **Parking lots:** 3
- **Kitchen:** Kitchenette
- **Land:** regular
- **Condition:** Good
- **environments:** 2

---

### Property status

State: Good

Age: 1930

Without Mortgage: Yes

---

## Description

Property located in Paso de la arena 2 houses in the same register. Next to Lecocq Park, Route 1, Santiago Vázquez

The first house has two bedrooms, CURRENTLY FOR RENT, the living room and the integrated kitchen create a spacious and bright space, ideal for spending time with family or with friends. 1 car garage

The second house is more compact but equally comfortable. The bedroom is spacious and has a full bathroom. The kitchen with daily dining room is a practical and functional space.

All spaces very bright and pleasant.

The terrace closed with PVC curtains is an excellent option for

take advantage of sunny days and enjoy an outdoor view, even when it's cold. Large Green Fund with open covered barbecue give you an additional space to share with friends and family.

Separate entrance with garage for up to 3 cars

Home 1

2 bedrooms

1 full bathroom

large living room

Kitchen integrated into the living room

light roof

1 car garage

house 2

1 bedroom

1 full bathroom

Kitchen with dining room

large living room

backyard

Background with open barbecue

Terrace closed with PVC curtains

Ideal Investment and quiet life

Elementary \$459

Contribution \$2765

Residential Taxes \$265

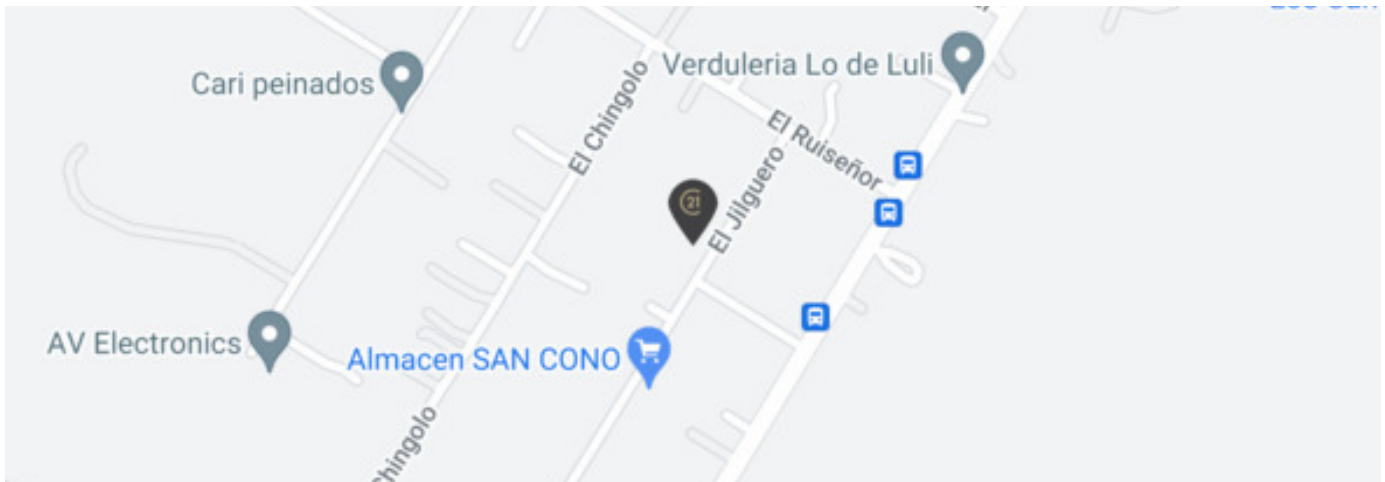
Real Estate Fees 3% + VAT

---

## Location

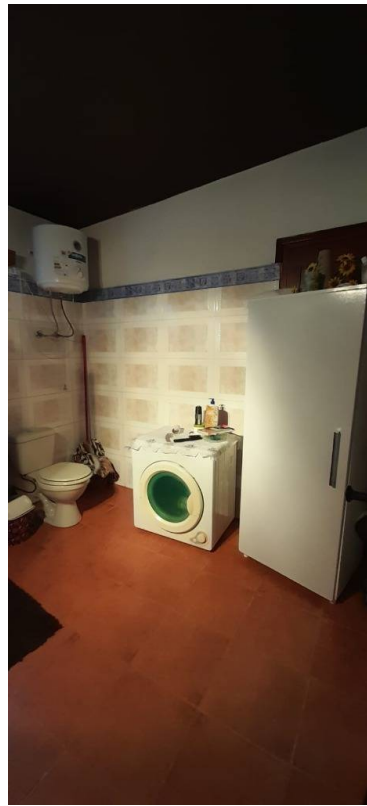
El Jilguero 2644 , Paso de la Arena, Montevideo

## References



---

## Photo Catalog







Property subject to availability.

Price subject to change without notice.

The sending of this file does not commit the parties to the subscription of any legal document. The information and measurements are approximate and must be confirmed with the relevant documentation.