



Leslie Rodriguez

**CENTURY 21.**  
East Coast

**ID: 6038**  
**lrodriguez@c21eastcoast.com.uy**  
**+59899596802**



**Condominium for Sale**

Calle 24 . Punta del Este, Maldonado



**Sale: US\$ 142,750**

**Property type: Condominium**

**Operation: Sale**

- **Land:** 52.0 sqm
- **Building:** 44.0 sqm
- **Bedrooms:** 1
- **Bathrooms:** 1
- **Stories:** 4
- **Condition:** New
- **Floor number:** 4
- **environments:** 2

- Kitchen
- Electricity
- Balcony
- A / C pre-installation
- Security

- Pool
- Internet
- Living room
- Public laundry
- 24 hour security

- Water
- Pavement
- Gym
- Quincho
- Solarium

- Cable
- Phone
- Swimming pool
- Sauna

**Property status**

State: New

Age: 2023

## Description

SUDESTE, a real estate jewel with a privileged location just 100 meters from the beach and 200 meters from the World Trade Center.

Enjoy urban life and coastal tranquility in this development with 36 apartments with 1 and 2 bedrooms.

It has 38 garages, an indoor pool, a gym, a spa and a massage room. In addition, it offers 24-hour security, security cameras, 2 barbecues and a rooftop with panoramic views of the city and the sea.

SUDESTE exceptionally combines the ideal location with the quality of life you seek.

Schedule your visit and do not miss the opportunity to be part of this exclusive real estate development in Punta del Este.

---

## Location

Calle 24 . , Punta del Este, Maldonado

## References

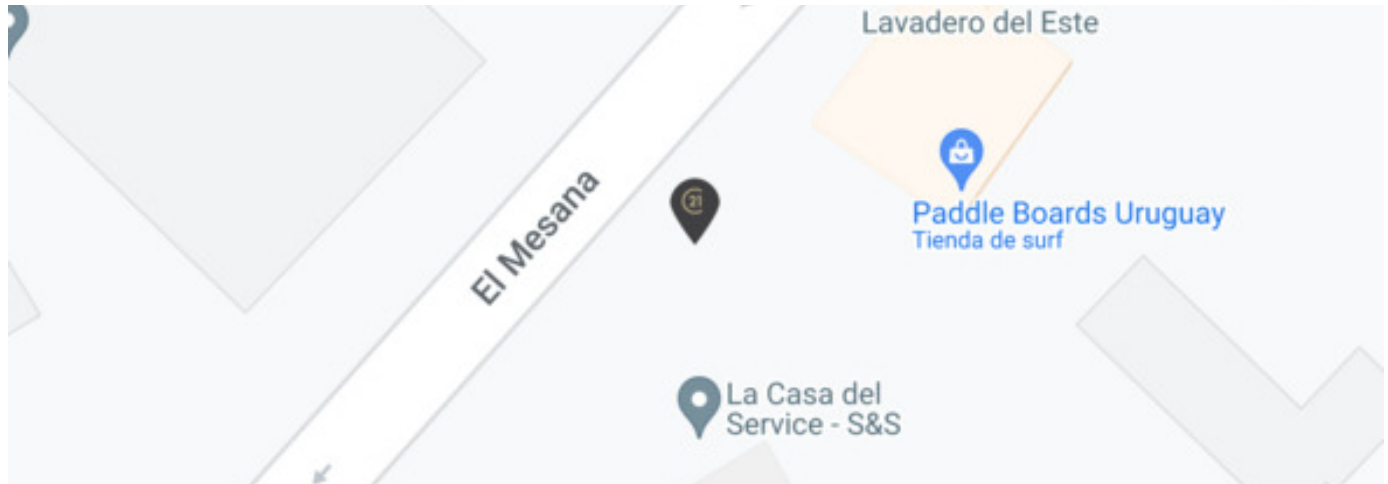


Photo Catalog



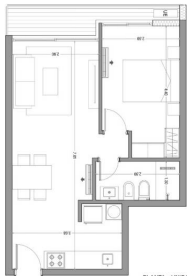
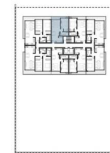
PLANTA - UNIDAD 103  
ESC. 1:50

TIPOLOGIA 1 DORMITORIO  
UNIDADES:  
103-403 / 104-404 / 107-407 / 108-408

Área total.....48m<sup>2</sup>  
Área interior (incluye muros).....44m<sup>2</sup>  
Área terraza(incluye muros).....4m<sup>2</sup>  
Alcova B.C.....Am<sup>2</sup>

Las medidas generales de los locales son de proyecto, pudiendo sufrir variaciones y distorsiones menores durante la obra. Las modificaciones constructivas que impliquen un cambio estructural o cambio de los estándares son motivo de aumento de unidades generales.

REFERENCIA PLANTA TIPO  
ESC. 1:500



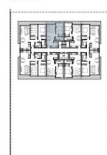
PLANTA - UNIDAD 103  
ESC. 1:50

TIPOLOGIA 1 DORMITORIO  
UNIDADES:  
103-403 / 104-404 / 107-407 / 108-408

Área total.....48m<sup>2</sup>  
Área interior (incluye muros).....44m<sup>2</sup>  
Área terraza(incluye muros).....4m<sup>2</sup>  
Alcova B.C.....Am<sup>2</sup>

Las medidas generales de los locales son de proyecto, pudiendo sufrir variaciones y distorsiones menores durante la obra. Las modificaciones constructivas que impliquen un cambio estructural o cambio de los estándares son motivo de aumento de unidades generales.

REFERENCIA PLANTA TIPO  
ESC. 1:500



Av. Roosevelt y Av. Orlando Pedragosa Sierra,Punta del Este, Maldonado  
T 099170152 | contacto@c21eastcoast.com.uy

Property subject to availability.

Price subject to change without notice.

The sending of this file does not commit the parties to the subscription of any legal document. The information and measurements are approximate and must be confirmed with the relevant documentation.