



**Condominium for Rent**

rambla williman 111 Punta del Este, Maldonado



**Rent: US\$ 19,000**

**Property type: Condominium**

**Operation: Rent**

- **Land:** 300.0 sqm
- **Building:** 300.0 sqm
- **Bedrooms:** 3
- **Bathrooms:** 3
- **Half Baths:** 1
- **Parking lots:** 2
- **Condition:** Very good
- **Number of Elevators:** 4
- **Floor number:** 4
- **environments:** 5

- Kitchen
- Natural gas
- Balcony
- Dependence
- Living room
- Toilete

- Suitable professional
- Gym
- Swimming pool
- Sauna
- Solarium
- Cantidad de Autos: 2
- Good access

- Water
- Internet
- Storage
- Gallery
- Living room
- Dressing room

- Central heating
- Hydromassage
- A / C pre-installation
- 24 hour security
- SUM
- Orientacion del Terreno (en caso): 2
- Entrance ramp

- Cable
- Pavement
- Dining Room
- Hall
- Courtyard
- Individual air conditioning
- Garage
- Bright
- Public laundry
- Daytime safety
- Tipo Garage: 1
- Elevator
- Terrace
- Build style:

Departamento de finas

- Electricity
- Phone
- Dining room
- Laundry
- suite room
- Alarm
- Furnished
- Car saves space
- Grill
- Game room
- Goal security
- Acceso al Garage: 1
- Reception
- Access control

---

### Property status

State: Very good

Age: 2000

---

### Description

Rent

fixed garage for two cars

the building has services

cinema

laundry room in the apartment (washing machine and clothes dryer)

It has a gym in a spacious room overlooking the promenade.

play room with childcare service

maid service and beach service

24 hour security

sauna and open pools in an incredible landscaped environment

24-hour staff attention making your stay truly relaxing.

temporary in Lumier building

It has 2 bedrooms plus an outbuilding

exclusive use terraces

---

### Location

rambla williman 111 , Punta del Este, Maldonado

### References



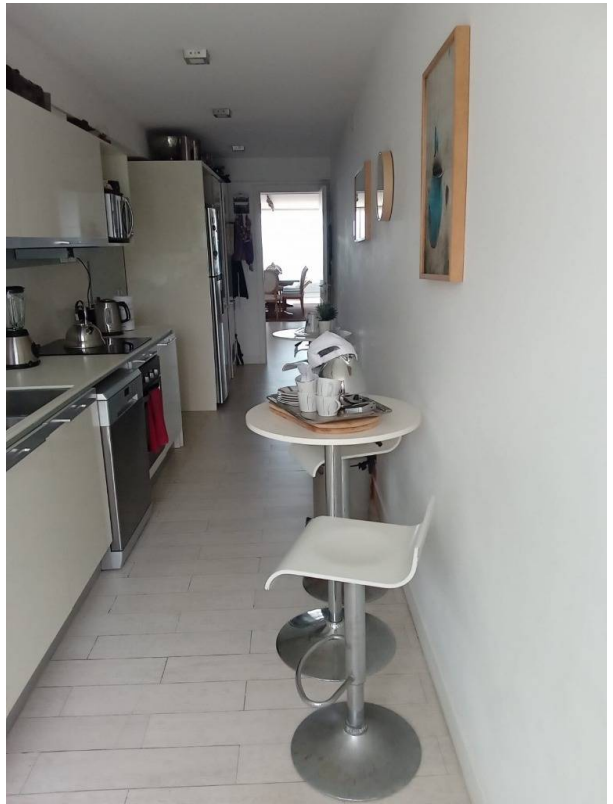
---

### Photo Catalog



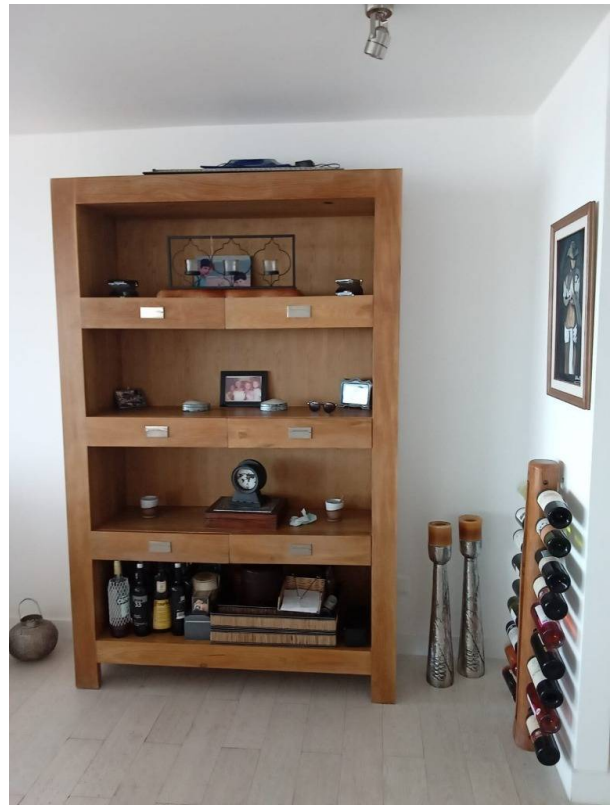










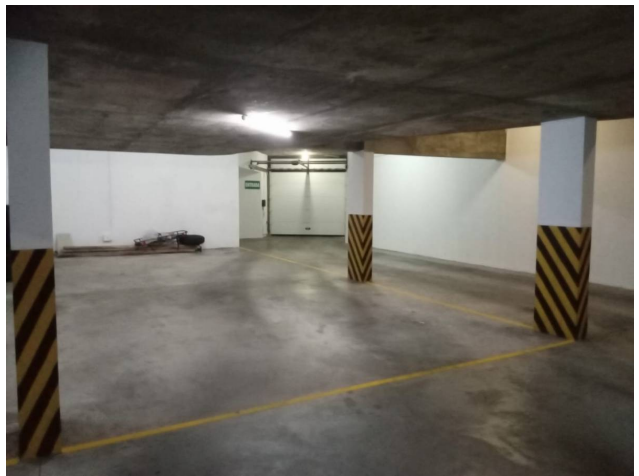
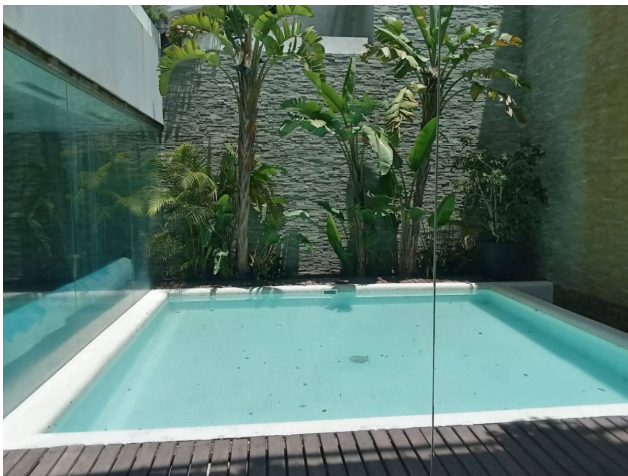












Property subject to availability.

Price subject to change without notice.

The sending of this file does not commit the parties to the subscription of any legal document. The information and measurements are approximate and must be confirmed with the relevant documentation.