

**Condominium for Sale**

Av. Franklin Delano Roosevelt parada 22, 20000 Punta del Este, Departamento de Maldonado  
20100 Punta del Este, Maldonado



**Sale: US\$ 268,000**

**Property type: Condominium**

**Operation: Sale**

- **Land:** 118.0 sqm
- **Building:** 77.0 sqm
- **Bedrooms:** 3
- **Bathrooms:** 3
- **Half Baths:** 1
- **Parking lots:** 1
- **Stories:** 23
- **Number of Elevators:** 4
- **Floor number:** 6
- **Number Of Houses:** 1
- **Showers:** 1
- **environments:** 1

- Cantidad de Autos: 1
- Private parking: 1

**Property status**

Age: 2024

## Description

Be part of this new venture, located in an area of avenues, on a shopping center and a 23 thousand m2 property with all the amenities, supermarkets, shopping, ideal rental or housing. Occupancy expenses regulations and plans 5%.

Garage usd 26,000

Atlántico will be an ideal space to live, work, walk, vacation and have unforgettable experiences.

It integrates a shopping center and apartment towers, connecting the key points of the East, in a strategic location:

Stop 22 Roosevelt Avenue.

Designed so that you have everything you need to experience the best of Punta del Este.

Apartments

Gastronomy

Services

Fitness Center

Kids Club

Parking lots

Cinemas

Entertainment

Fashion

Sport

Culture

Events

---

## Location

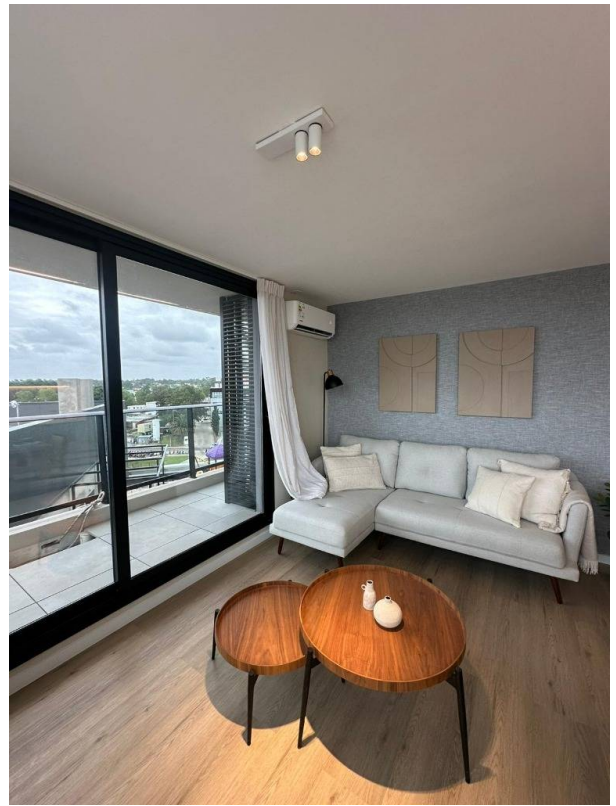
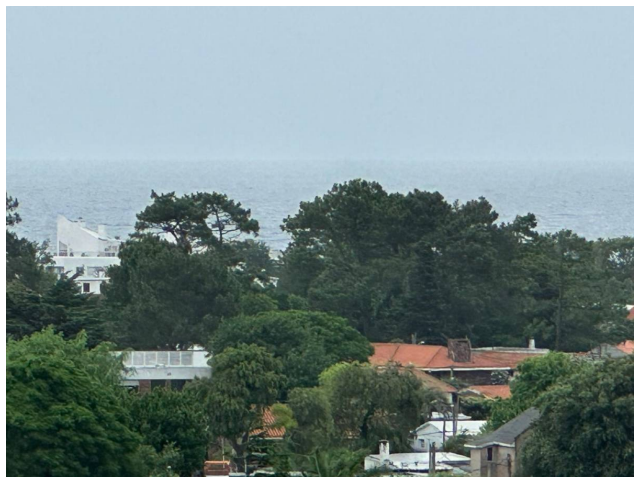
Av. Franklin Delano Roosevelt parada 22, 20000 Punta del Este, Departamento de Maldonado 20100 , Punta del Este, Maldonado

## References

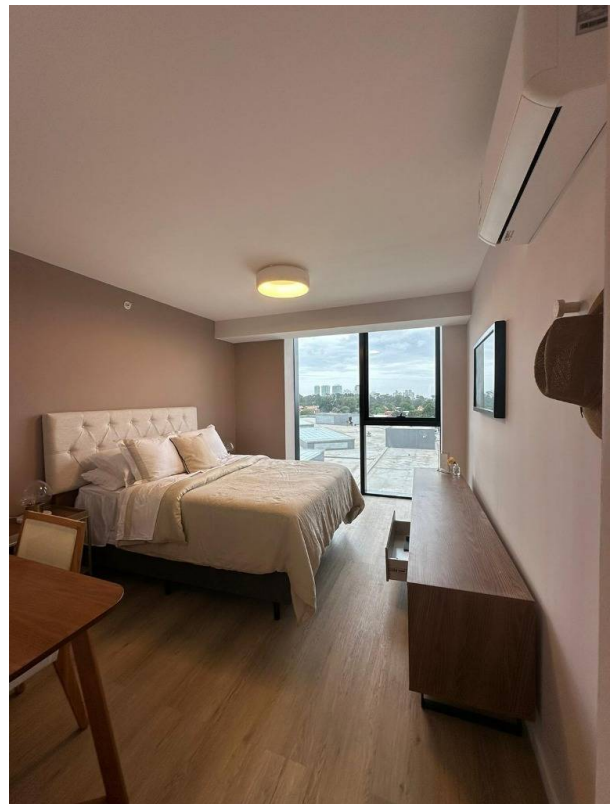
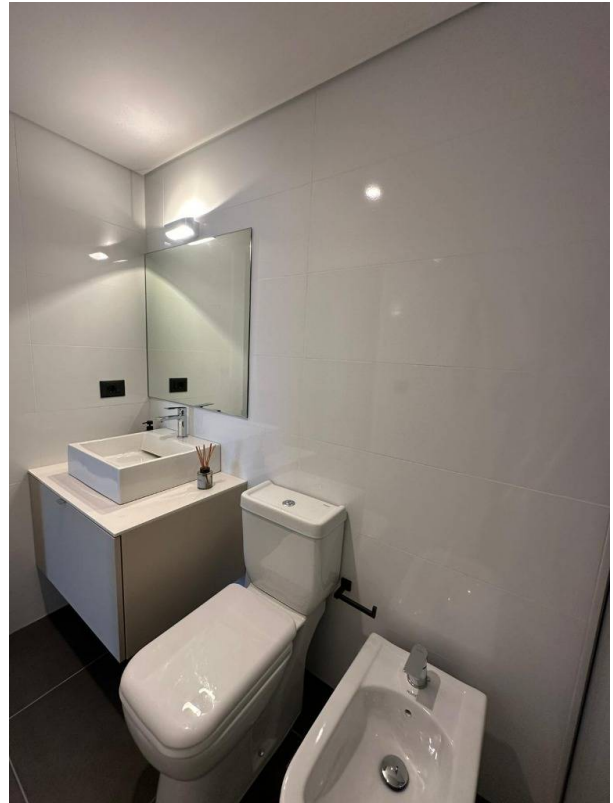


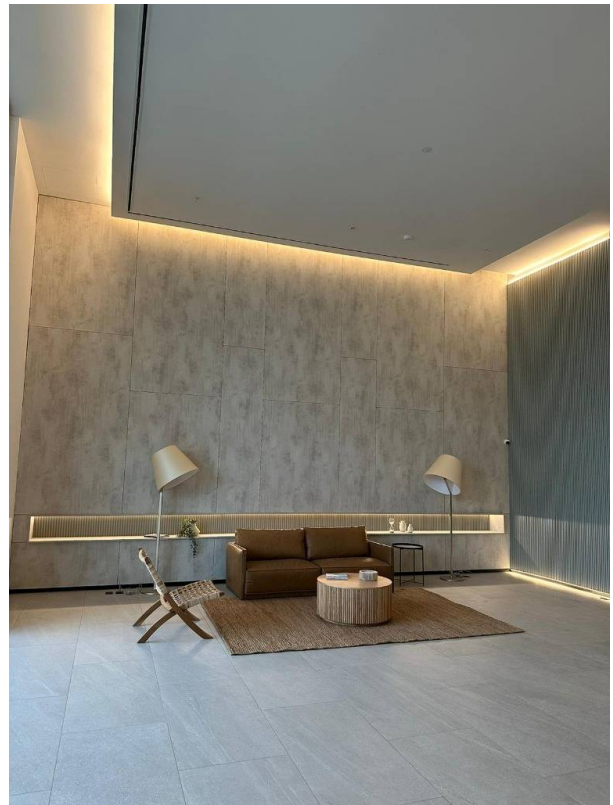
---

## Photo Catalog









**more**  
allius  
ATLÁNTICO

+59899999999  
 C/ LINDERO 2423 y 2424  
 Av. Roosevelt y Av. Comodoro  
 Punta del Este, Uruguay  
 more.com.uy

**PLANTA MASTERPLAN**  
 0011A

**PLANTA TIPO 1**  
 UNIDAD 602 AL 1902

**TIPO 3D-1**  
**UNIDAD 602 AL 1902**

**ÁREA TOTAL:** 118,74 m<sup>2</sup>  
**ÁREA PISCINA:** 17,97 m<sup>2</sup>  
**ÁREA TERRAZA CUBIERTA:** 8,84 m<sup>2</sup>  
**ÁREA TERRAZA DESCUBIERTA:** 308 m<sup>2</sup>  
**ESPACIOS COMUNES:** 32,43 m<sup>2</sup>

**REFERENCIAS:**  
 - ALUMBRADO: 100% (Luz ambiente)  
 - PANTALLAS: 100% (Luz ambiente)  
 - SUELO: 100% (Luz ambiente)

0 1 2 3  
 0 1 2 3

allius **GómezPlatero**  
 ARQUITECTURA & URBANISMO

**Av. Roosevelt y Av. Orlando Pedragosa Sierra, Punta del Este, Maldonado**  
**T 099170152 | contacto@c21eastcoast.com.uy**

Property subject to availability.  
 Price subject to change without notice.

The sending of this file does not commit the parties to the subscription of any legal document. The information and measurements are approximate and must be confirmed with the relevant documentation.