



Laura Misa

CENTURY 21.

Alpha

ID: 779

lmisa@c21alpha.com.uy
+59893432111



Condominium for Sale

Av. Prof. Dr. Euclides Peluffo Puerto Buceo, Montevideo



Sale: US\$ 983,000

Property type: Condominium

Operation: Sale

- **Land:** 319.0 sqm
- **Building:** 244.0 sqm
- **Bedrooms:** 3
- **Bathrooms:** 5
- **Half Baths:** 1
- **Stories:** 9
- **Land:** regular
- **Condition:** New
- **Number of Elevators:** 2
- **Floor number:** 2
- **Construction Quality:** High
- **environments:** 4

- Kitchen
- Cable
- Dinning Room
- Laundry
- Toilette
- Bright
- Daytime safety

- Pool
- Electricity
- Dining room
- Living room
- Dressing room
- Swimming pool
- Goal security

- Pets Allowed
- Balcony
- Desk
- Living room
- Sports Center
- Game room

- Water
- Storage
- Hall
- suite room
- Gym
- Security

Property status

State: New

Age: 2015

Without Mortgage: Yes

Description

Designed by the renowned architectural firm Carlos Ott Arquitectos in collaboration with Carlos Ponce de León Arquitectos, this building boasts a unique architectural concept that draws inspiration from nautical and organic forms. Its sinuous and curved façades evoke the imagery of ship prows, while its structure resembles that of a cloister with a central park surrounded by green spaces. This design seamlessly integrates with the recreational, commercial, and tourist areas of the surrounding neighborhood.

This spacious 3-bedroom apartment, located on the first floor of FORUM Puerto del Buceo, is a gem in the heart of Montevideo. The project stands on an 11,000-square-meter plot on the front line of the Rambla, ensuring breathtaking panoramic views of the coastline, the sea, and the beautiful central gardens from all the units.

Key features of this 298-square-meter constructed apartment include:

Stunning views of the Port of Montevideo.

A bright living-dining room with a large window opening to a 70-square-meter terrace with spectacular views of the Rambla and a barbecue area.

A comfortable open-plan American-style kitchen that harmoniously integrates with the living-dining area and features a breakfast bar. The kitchen is equipped with high-quality appliances, including a built-in oven, cooktop, and extractor hood, with access to a small 3-square-meter terrace overlooking the interior park.

Three spacious and luminous bedrooms, each with its own en-suite bathroom. The master bedroom includes a walk-in closet.

An additional guest bathroom.

A fourth bedroom with its own service bathroom.

A laundry room.

This apartment distinguishes itself through its exceptional quality, featuring reinforced concrete structure, prefinished wood floors, porcelain tiles in bathrooms and kitchen, Hansgrohe fixtures, Silestone countertops, and Ferrum sanitary fittings. Additionally, all windows are double-glazed for effective sound insulation. The level of finish throughout the apartment is of the highest quality.

The project also offers a range of top-notch amenities, including:

Indoor and outdoor swimming pools.

Children's pool.

Counter-current swimming pool.

Gym.

Changing rooms.

Sauna and massage room.

Multipurpose room with independent access.

Gourmet space.

Business Center.

Children's and teenagers' lounge.

A spacious 3,500-square-meter park.

24-hour security service.

Generator for common areas.

Bicycle racks.

Feel free to inquire about available parking options.

Please note that the prices mentioned do not include occupancy expenses, reserve fund, and real estate fees, which amount to 3% plus VAT.

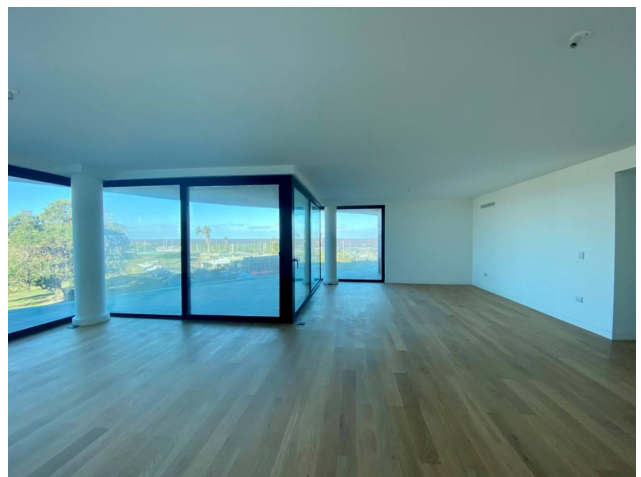
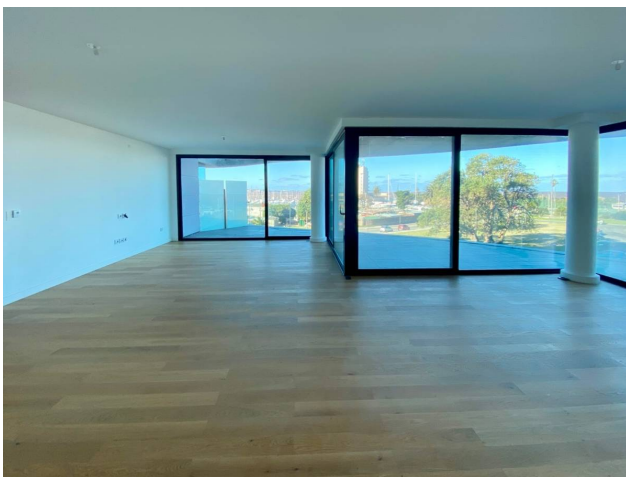
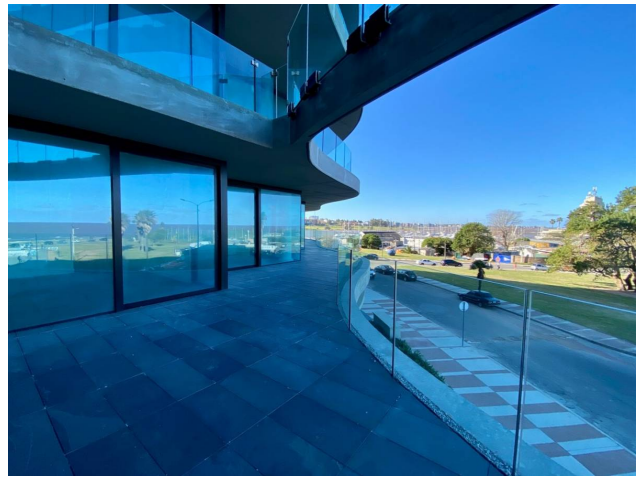
Location

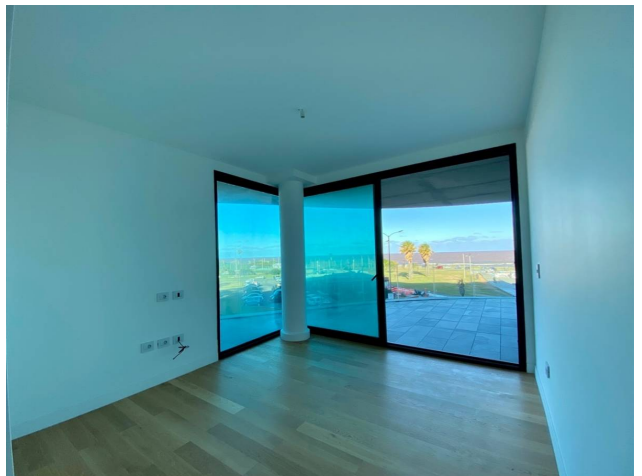
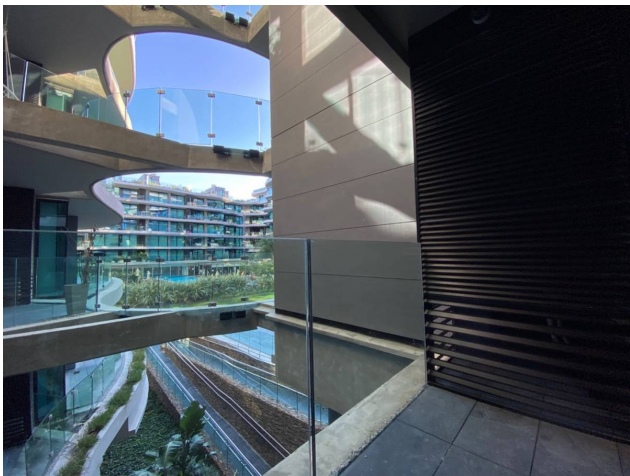
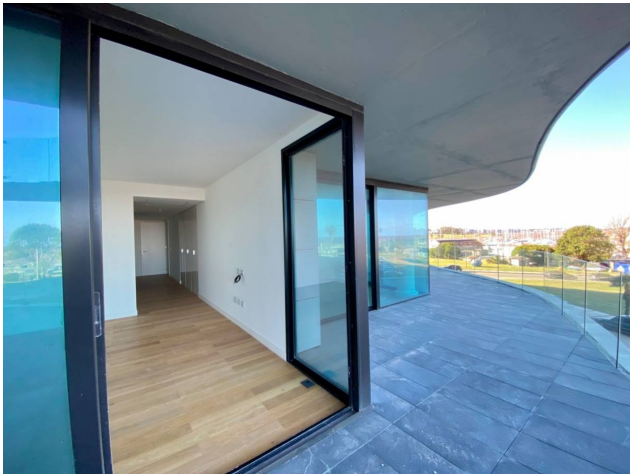
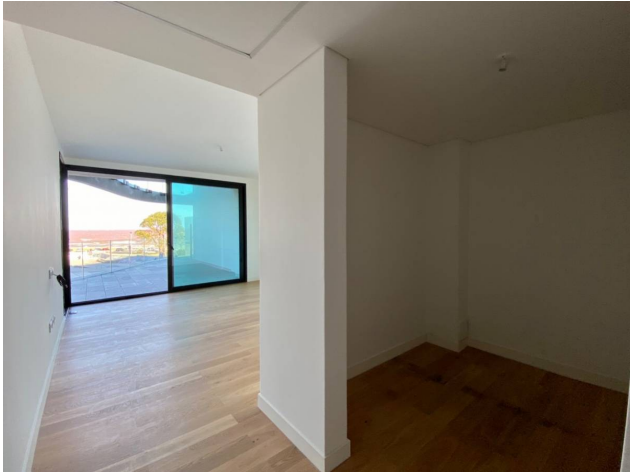
Av. Prof. Dr. Euclides Peluffo , Puerto Buceo, Montevideo

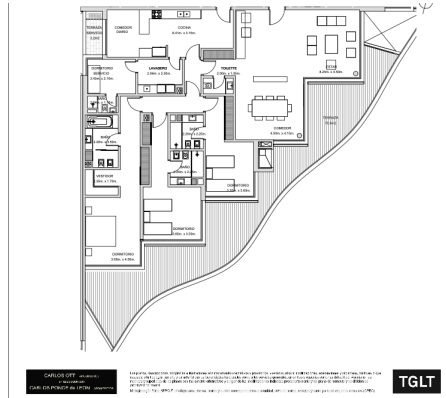
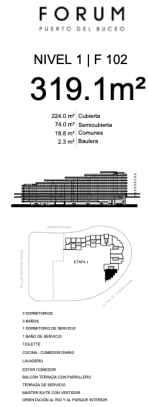
References



Photo Catalog







FORUM - Av. Prof. Dr. Euclides Peluffo 1649 GSS104, Buceo, Montevideo
T 099170152 | contacto@c21alpha.com.uy | <https://c21alpha.com.uy>

Property subject to availability.

Price subject to change without notice.

The sending of this file does not commit the parties to the subscription of any legal document. The information and measurements are approximate and must be confirmed with the relevant documentation.