



**Patricia Planells
Giuliani**

CENTURY 21.

East Coast

ID: 8303

pplanells@c21eastcoast.com.uy

+59897661566



Land for Sale

camino maritimo 000 Punta Ballena, Maldonado



Sale: US\$ 2,100,000

Property type: Land

Operation: Sale

- **Land:** 15.0 Hectares

- | | | | |
|----------------|------------|------------|---------|
| • Pets Allowed | • Water | • Cable | • Sewer |
| • Electricity | • Internet | • Pavement | • Phone |

Property status

Age: 2024

Without Mortgage: Yes

Description

Strategic Location: The proximity to the sea and its location in an expansion area are very positive aspects for the potential development of the property. The demand for properties near the sea is always high, especially in tourist destinations like Punta del Este.

Proximity to Punta del Este: The fact that the property is a few minutes from Punta del Este increases its attractiveness, since this city is known internationally as a luxury and leisure tourist destination.

Potential for Real Estate Development: With fifteen hectares available, there is a large amount of space to dream up real estate projects of various types, such as residential, tourist or commercial developments. Proximity to a renowned private neighborhood such as Los Tordillos can add value to the property.

Opportunities for Exclusive Projects: The property's prime location allows for the creation of exclusive, high-end projects that could attract investors and buyers interested in living or spending time in a prime location.

This great pattern promises unparalleled development to all investors with great vision of the future.

Location

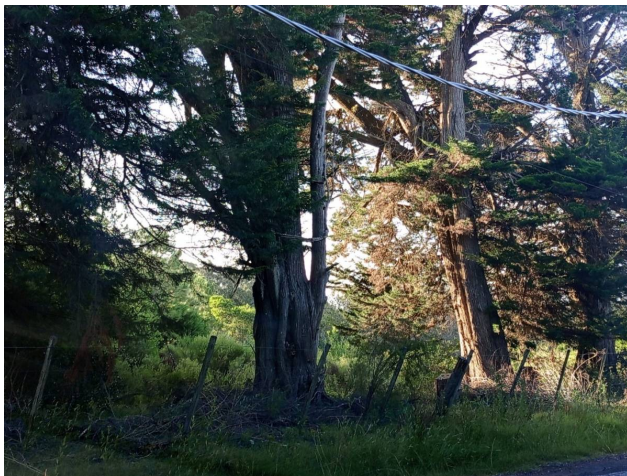
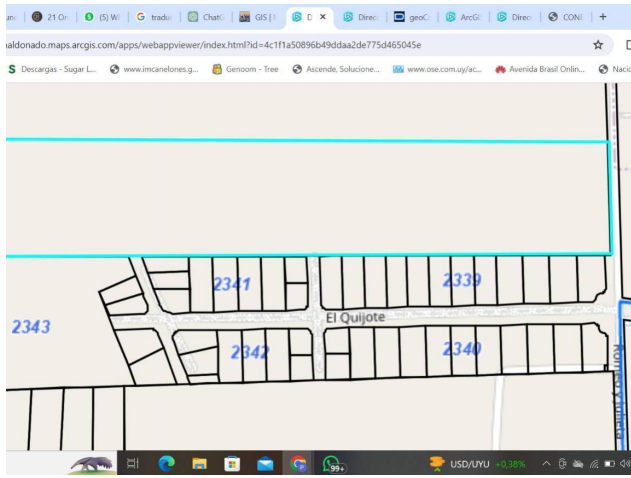
camino maritimo 000 , Punta Ballena, Maldonado

References



Photo Catalog





Av. Roosevelt y Av. Orlando Pedragosa Sierra, Punta del Este, Maldonado
T 099170152 | contacto@c21eastcoast.com.uy

Property subject to availability.

Price subject to change without notice.

The sending of this file does not commit the parties to the subscription of any legal document. The information and measurements are approximate and must be confirmed with the relevant documentation.