



**Patricia Planells
Giuliani**

CENTURY 21.

East Coast

ID: 8334

pplanells@c21eastcoast.com.uy

+59897661566



Condominium for Rent

ROOSVELT 17 Maldonado, Maldonado



Rent: 30,000

Maintenance : 3,100

Property type: Condominium

Operation: Rent

- **Land:** 60.0 sqm
- **Building:** 60.0 sqm
- **Bedrooms:** 2
- **Bathrooms:** 1
- **Condition:** Excellent
- **environments:** 3

- | | | | |
|-----------|----------------|------------|---------------|
| • Kitchen | • Pets Allowed | • Water | • Cable |
| • Sewer | • Electricity | • Internet | • Pavement |
| • Phone | • Yard | • Laundry | • Living room |

Property status

State: Excellent

Age: 1998

Without Mortgage: Yes

Description

Sale of a divine two-bedroom apartment located in the Roosevelt and Figueroa area. This location is key, since it is located between Maldonado, the terminal area, and Punta del Este. The apartment has large, bright and airy spaces, located on the second floor, accessible by stairs. In addition, it has garden areas and parking.

This is a great investment opportunity in the eastern area.

If you are interested in this apartment, I suggest you contact the real estate agent in charge of the sale for more details and to arrange a viewing.

Location

ROOSVELT 17 , Maldonado, Maldonado

References

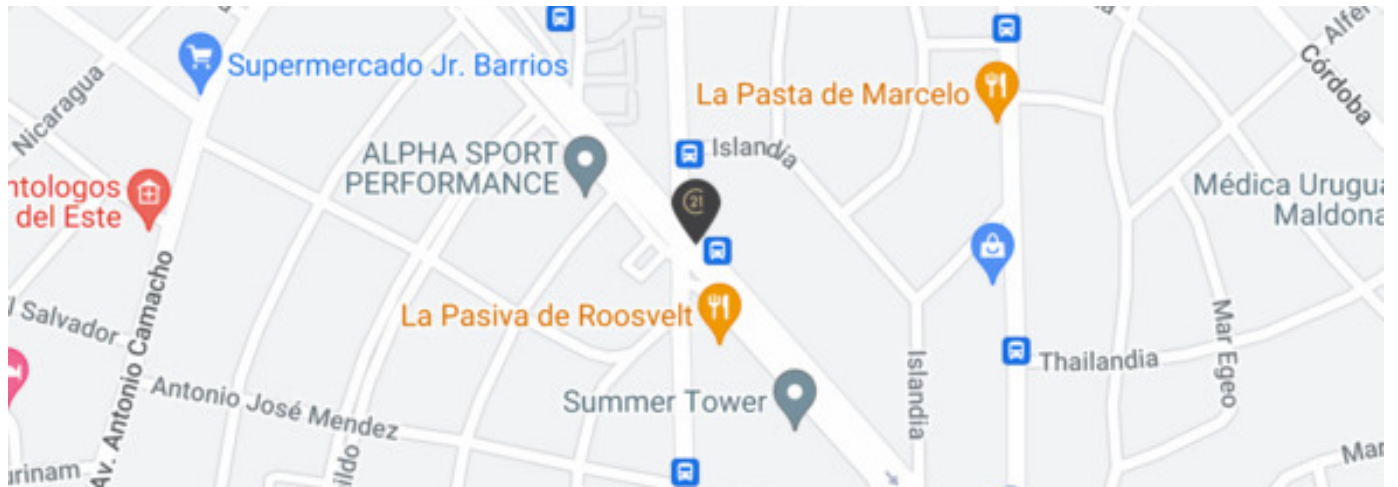
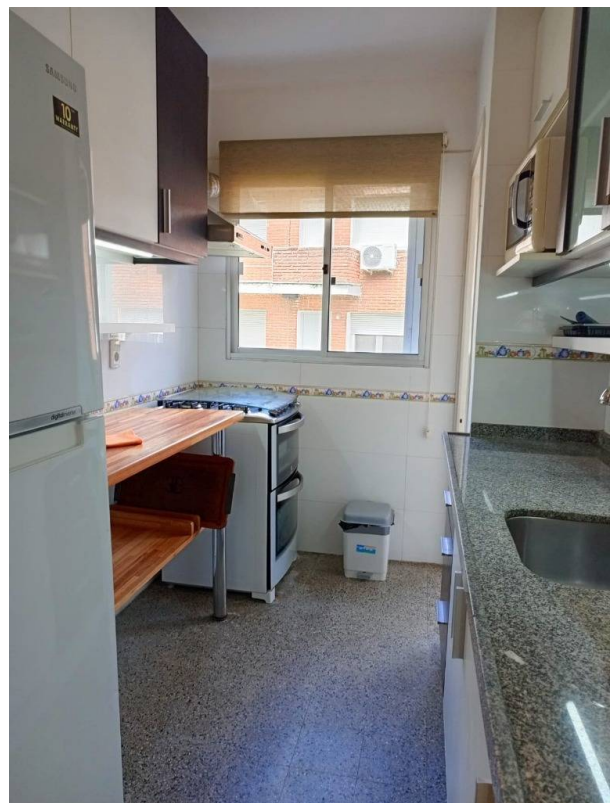
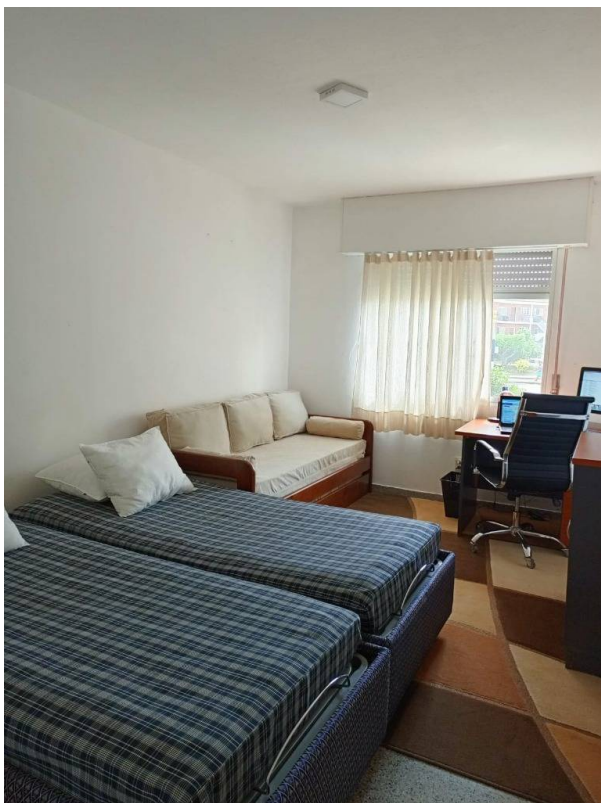
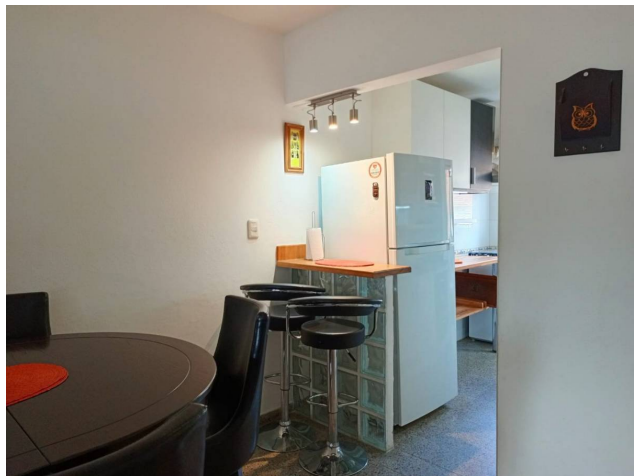
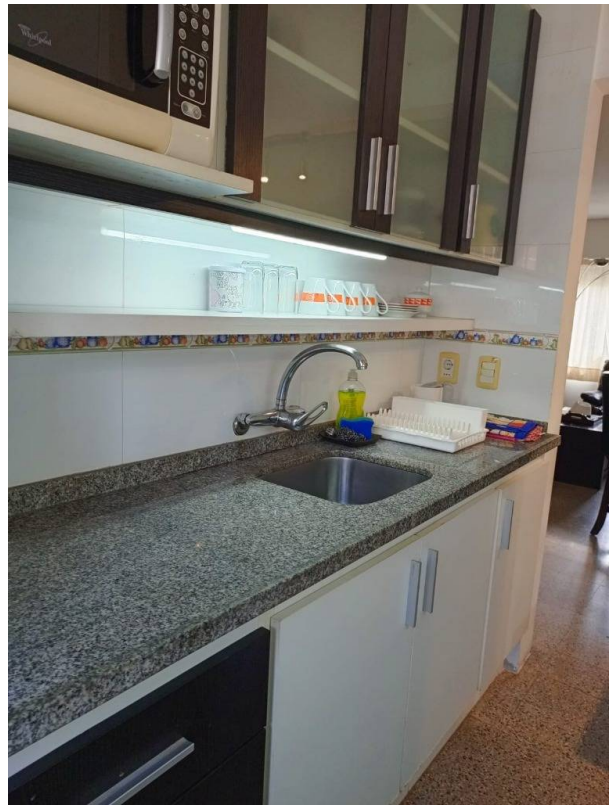
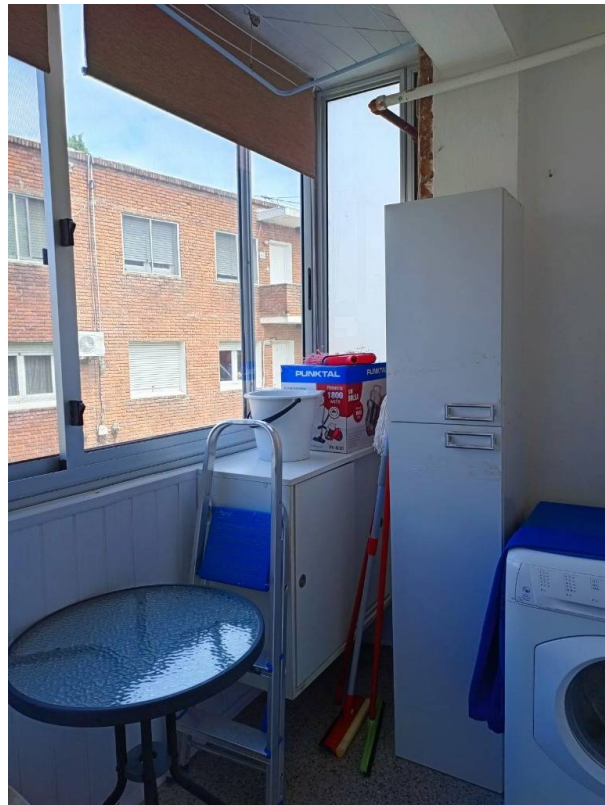
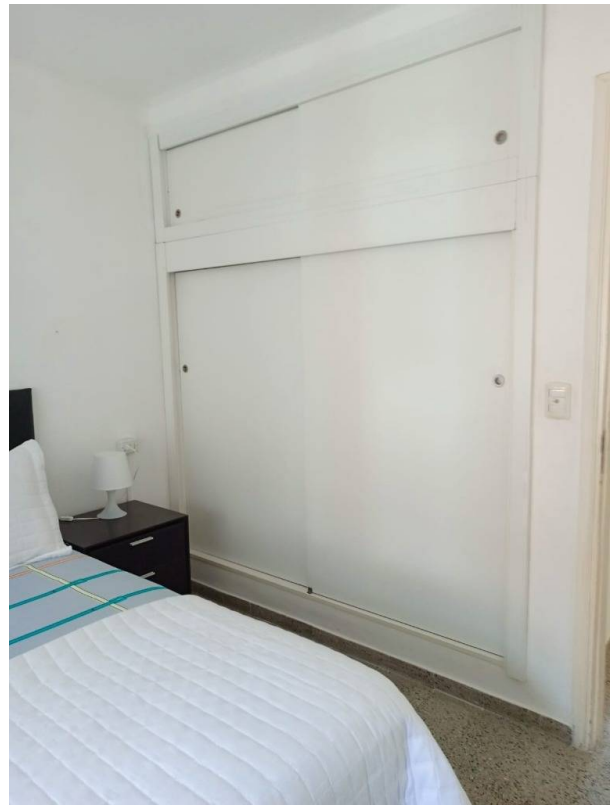


Photo Catalog









Av. Roosevelt y Av. Orlando Pedragosa Sierra, Punta del Este, Maldonado
T 099170152 | contacto@c21eastcoast.com.uy

Property subject to availability.

Price subject to change without notice.

The sending of this file does not commit the parties to the subscription of any legal document. The information and measurements are approximate and must be confirmed with the relevant documentation.