



Victoria Fleitas

CENTURY 21.

Alpha

ID: 8800

vfleitas@c21alpha.com.uy

+59892237347



House for Sale

Elzear San Giuffra Colón, Montevideo



Sale: US\$ 119,000

Property type: Home

Operation: Sale

- Land: 624.0 sqm
- Building: 40.0 sqm
- Front measurement: 12.0 m
- Background measurement: 26.6 m
- Bedrooms: 1
- Bathrooms: 1
- Parking lots: 3
- Land: regular
- Condition: Regular
- Construction Quality: Economical
- environments: 2

- | | | | |
|----------------|----------------|--------------------------|---------------|
| • Kitchen | • Pets Allowed | • Water | • Electricity |
| • Internet | • Dining Room | • Yard | • Courtyard |
| • Pet friendly | • Garage | • A / C pre-installation | |

Property status

State: Regular

Age: 84

Description

Sale of 2 properties in the same register.

Located 2 blocks from the Colón Terminal and 2 blocks from César Mayo Gutiérrez Avenue, close to all the services of the Colón neighborhood and with transportation to all points of Montevideo, La Paz, Las Piedras and Progreso.

The main property consists of:

- 1 bedroom.
- Full kitchen and bathroom
- Living room
- Traditional construction with iron roof.

The second property is currently used as a warehouse, since it is completely to be recycled. It has:

- 2 bedrooms
- Bathroom and kitchen with wood stove.
- Light roof

The properties are located on a large plot of land of 624 m2, with great construction potential, ideal for investors.

It is a great opportunity to invest or live in a quiet area, close to all the services of the historic Colón neighborhood.

Professional fees 3% + VAT.

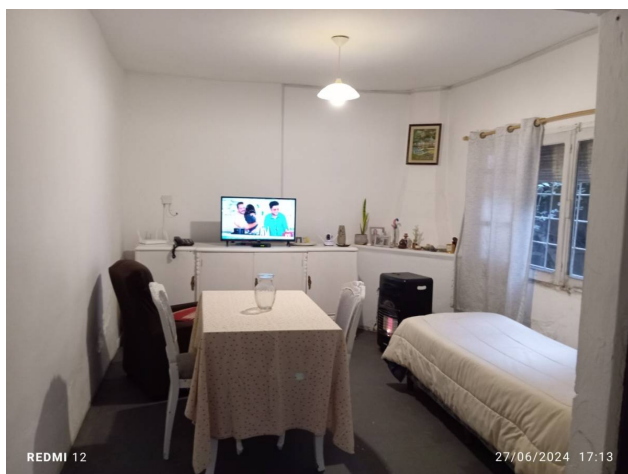
Location

Elzear San Giuffra , Colón, Montevideo

References



Photo Catalog







FORUM - Av. Prof. Dr. Euclides Peluffo 1649 GSS104, Buceo, Montevideo
T 099170152 | contacto@c21alpha.com.uy | https://c21alpha.com.uy

Property subject to availability.

Price subject to change without notice.

The sending of this file does not commit the parties to the subscription of any legal document. The information and measurements are approximate and must be confirmed with the relevant documentation.

