



Melissa Gómez  
Perez

CENTURY 21.

Alpha

ID: 9487  
mgomez@c21alpha.com.uy  
+59895600263



### Condominium for Sale

la calle Boulevard Jose Batlle y Ordoñez, entre Cardal y Luciano Romero. La Blanqueada, Montevideo



Sale: US\$ 81,981

Property type: Condominium

Operation: Sale

- Land: 22.6 sqm
- Building: 33.7 sqm
- Bathrooms: 1
- Land: regular
- Condition: New
- Building Classification: en pozo
- Number of Elevators: 4
- Number Of Houses: 176
- Construction Quality: High
- environments: 1

- |  |  |  |   |
|--|--|--|---|
| <ul style="list-style-type: none"> <li>• Kitchen</li> <li>• Electricity</li> <li>• Balcony</li> <li>• Hall</li> <li>• Living room</li> </ul> | <ul style="list-style-type: none"> <li>• Pets Allowed</li> <li>• Internet</li> <li>• Dining Room</li> <li>• Yard</li> <li>• Courtyard</li> </ul>   | <ul style="list-style-type: none"> <li>• Water</li> <li>• Pavement</li> <li>• Dining room</li> <li>• Laundry</li> <li>• Individual air conditioning</li> <li>• Gym</li> <li>• Tipo de cobertura (Garage): 1</li> <li>• Elevator</li> <li>• Good access</li> <li>• Construction status: En pozo entrega junio 2026</li> </ul> | <ul style="list-style-type: none"> <li>• Cable</li> <li>• Phone</li> <li>• Desk</li> <li>• Living room</li> <li>• Suitable credit</li> <li>• Pet friendly</li> <li>• Grill</li> <li>• Tipo Garage: 1</li> <li>• Acceso al Garage: 1</li> <li>• Terrace</li> <li>• Ground level access</li> <li>• Class: A</li> <li>• Finishes: De diseño contemporáneo e imponente. posee naturaleza incorporada</li> </ul> |
| <ul style="list-style-type: none"> <li>• Garage</li> <li>• Public laundry</li> </ul>   | <ul style="list-style-type: none"> <li>• In construction</li> <li>• Game room</li> </ul>   |  |   |
| <ul style="list-style-type: none"> <li>• Cantidad de Autos: 70</li> <li>• Natural lighting</li> </ul>  | <ul style="list-style-type: none"> <li>• Orientacion del Terreno (en caso): 3</li> <li>• Build style: Diseño de fachadas que incluyen proporciones adecuadas de acristalamientos, asegurando las visuales y</li> </ul> |  |   |

a su vez la menor pérdida de energía a través de la envolvente.

en planta baja y último piso. Incorpora de materiales varios como: hormigón visto, paneles prefabricados, vegetación, mix de barandas de vidrio y aluminio, y carpinterías de aluminio.

• Windows: Carpinterías de aluminio, con cortinas de enrollar en todos los dormitorios.

• Type of lighting: Excelente

• Floor type: • Hall principal, circulaciones y baños: porcelanato o similar. • En zonas de estar y dormitorios: piso imitación madera. • Terraza: empalomado de losetones de hormigón prefabricado o wpc. • Circulación vehicular y cocheras: hormigón en paños o adoquines según ubicación. • Área exterior de amenities: porcelanato exterior, empalomado de losetones de hormigón prefabricado.

• Private parking: 70

---

### Property status

State: New

Age: 0

---

## Description

This building is designed to meet the needs of a young and professional class audience aspirational mean. It has a wide variety of apartments, ranging from studio apartments to two bedroom units. Each unit is designed to maximize the space available and with a style contemporary and functional. In addition, the apartments have with stunning views of the city and the river. It is important note that the apartments of 01 Vista are equipped with home automation, which allows them to coordinate various aspects of your home from your mobile phone, and allow integration of technologies in the home to improve the quality of life, energy efficiency and resident safety.

01 Vista has a great number of amenities that are designed to satisfy all needs of its residents.

Among them are a space of Cowork, a SUM, 360° viewpoints, SUM, One covered grill and two semi-covered, solarium, Wet Spa, gym, parks, bike areas underground parking and garages. These spaces are designed for offer a unique experience and complete life in community, in a comfortable environment. The building is sustainable and will be certified by EDGE, which means it has been designed to be efficient in use of natural resources, reduce carbon emissions and minimize environmental impact. This approach sustainable is highly valued by the target audience of the building, who They seek a more conscious life and Respectful with the environment.

DELIVERY JUNE 2026

FEES 3%+VAT

---

## Location

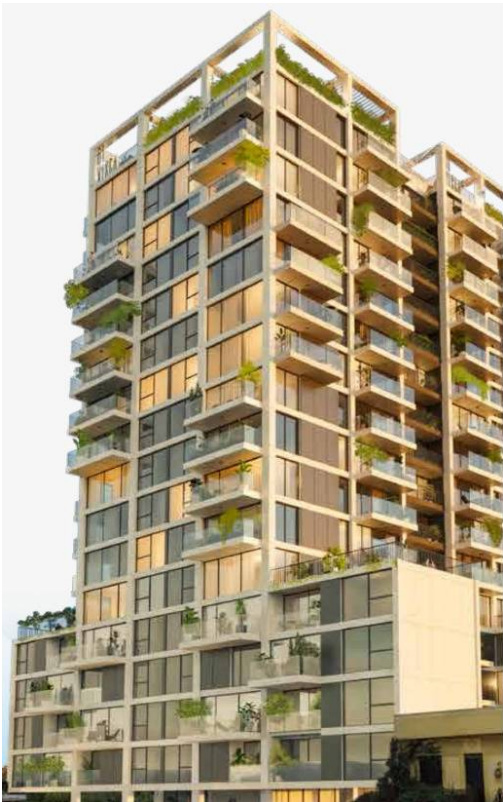
la calle Boulevard Jose Batlle y Ordoñez, entre Cardal y Luciano Romero. , La Blanqueada, Montevideo

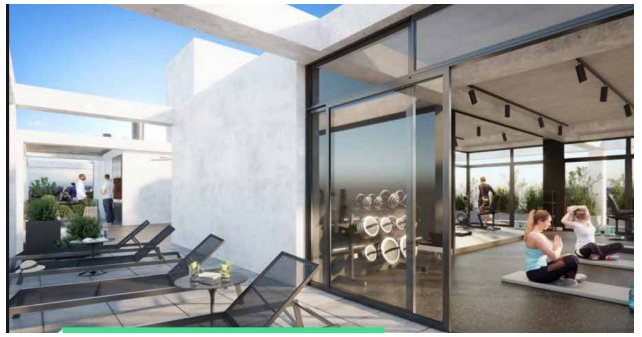
## References



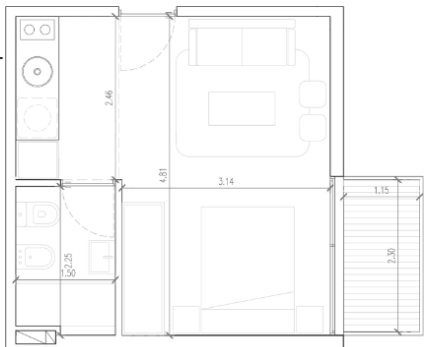
## Photo Catalog



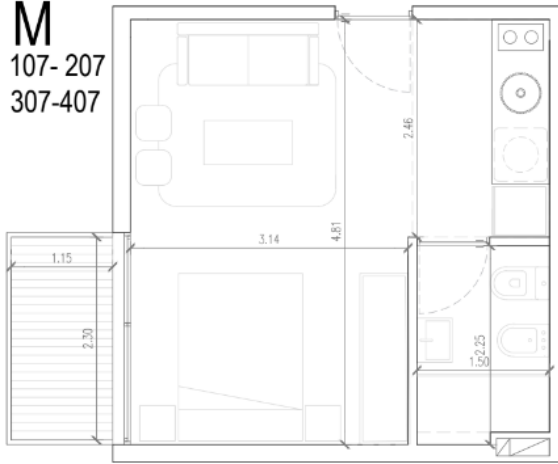




M  
105-205-  
305-405



**M**  
107- 207  
307-407



**FORUM - Av. Prof. Dr. Euclides Peluffo 1649 GSS104, Buceo, Montevideo**  
**T 099170152 | contacto@c21alpha.com.uy | <https://c21alpha.com.uy>**

Property subject to availability.

Price subject to change without notice.

The sending of this file does not commit the parties to the subscription of any legal document. The information and measurements are approximate and must be confirmed with the relevant documentation.