



Melissa Gómez
Perez

CENTURY 21.

Alpha

ID: 9488

mgomez@c21alpha.com.uy
+59895600263



Condominium for Sale

Brito Foresti La Blanqueada, Montevideo



Sale: US\$ 132,800

Property type: Condominium

Operation: Sale

- **Land:** 32.7 sqm
- **Building:** 50.8 sqm
- **Bedrooms:** 1
- **Bathrooms:** 1
- **Parking lots:** 41
- **Land:** regular
- **Condition:** Excellent
- **Number of Elevators:** 2
- **Number Of Houses:** 81
- **Construction Quality:** High
- **Office area:** 1
- **environments:** 2

- Kitchen
- Electricity
- Balcony
- Hall
- Living room

- Pets Allowed
- Internet
- Dinning Room
- Yard
- Office

- Water
- Pavement
- Dining room
- Laundry
- Courtyard

- Cable
- Phone
- Desk
- Living room
- Individual air conditioning
- Underground garage
- Grill
- Solarium
- Acceso al Garage: 1
- Cantidad de Autos: 41
- Orientacion del Terreno (en caso): 3
- Class: A

- Suitable credit
- Garage
- A / C pre-installation
- SUM

- Pet friendly
- In construction
- Public laundry
- Tipo de cobertura (Garage): 1

- Individual heating
- Gym
- Security
- Tipo Garage: 1
- Tipo de Padrón del inmueble: 1

- Elevator

- Build style: Excelente

- Construction status: En

• Building type:
Residencial

• Type of Walls: Muros
separativos de espacios
comunes y entre
unidades y exteriores de
mampostería, tabiques
interiores de placa de
yeso con aislación
acústica. Paredes
revocadas, enduidas y
pintadas.

pozo
• Structure Type:
Independiente de
hormigón armado.

• Windows: Las aberturas
son de aluminio
• Emergency doors: 5
• Type of lighting: As
unidades tendrán un
tablero seccional con
llaves termomagnéticas y
disyuntor diferencial,
desde el cual se
comandarán los
diferentes circuitos de
iluminación y
tomacorrientes.

• Private parking: 41

Property status

State: Excellent

Age: 0

Description

A building of 81 apartments which are developed in two high blocks of six levels each and a low block of three levels, thus forming a prominent project in the area.

All the blocks that make up the building are surrounded by garden patios.

One of the main characteristics is that planters are displayed on its façades throughout its entire length, which together with the color of the building, give a natural, sensitive and contemporary image.

It has a basement with garages and bike parking for all apartments. The entrance to the building on the ground floor is characterized by having a unique path with bike parking spaces and green posts that will be spaces destined to be, enjoy, read or work. In addition, the hall of the building has an interior cowork area.

In order to crown the tall block, a set of amenities are displayed on the top level.

In this building, nature, sustainable mobility and technology are part of the design.

The main hall, almost entirely glazed, is linked to the front garden, the bike parking and the internal gardens, creating a very well-lit environment, surrounded by vegetation. It also has a cowork area.

Four interior gardens and a front garden are defined for everyone's access and use. Each one is characterized by the incorporation of a different native tree. Living areas are also included, qualifying all apartments and connecting them with nature.

On the top floor of the high block are the common and service areas for the enjoyment of all owners: two semi-covered barbecue grills, laundry with tender, service areas, an indoor coliving area with an outdoor terrace and a wet spa with a solarium.

As a distinctive element, a common garden space is incorporated for the use of the entire building, giving a unique character to the building and the area.

Two electromechanical elevators without a machine room with capacity for 8 people each.

41 Underground garages.

Bicycle racks in the basement and on the ground floor.

It will have a technological platform, where spaces can be reserved in case they want more privacy or if they have an important event. On the other hand, there will be a communications channel where you can make queries, pay the building's common expenses, and view manuals and regulations.

Home automation: Entry control at accesses to provide more security and control the flow of people, lighting control of spaces and audio and video in case of holding an event or meeting.

FEES 3%+VAT

Location

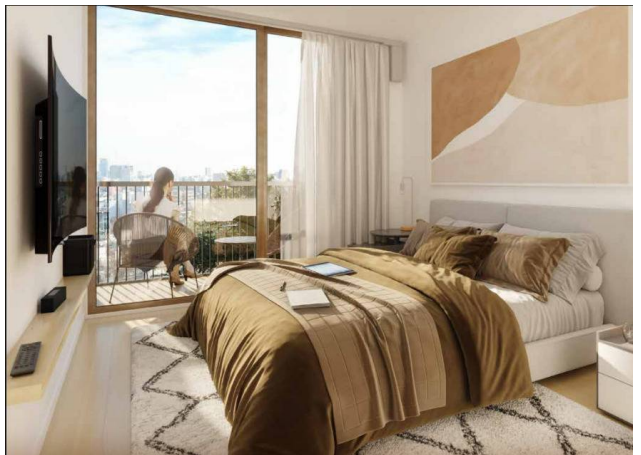
Brito Foresti , La Blanqueada, Montevideo

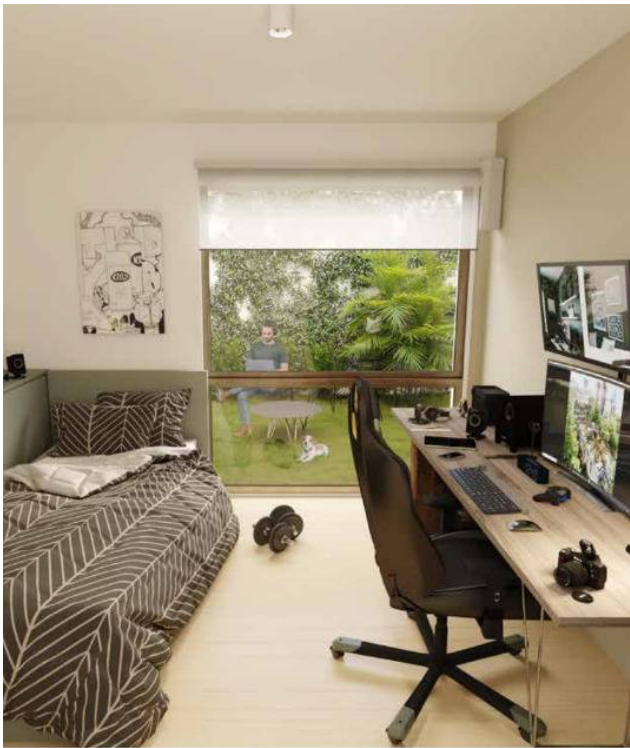
References



Photo Catalog









1 DORMITORIO

Sup total 50,17 m²
Propio 32,58 m²
Terraza 6,26 m²
Jardinería 2,04 m²
CDM 9,29 m²



1 DORMITORIO

Sup total 66,57 m²
Propio 34,55 m²
Terraza 21,70 m²
CDM 9,92 m²



FORUM - Av. Prof. Dr. Euclides Peluffo 1649 GSS104, Buceo, Montevideo
T 099170152 | contacto@c21alpha.com.uy | https://c21alpha.com.uy

Property subject to availability.

Price subject to change without notice.

The sending of this file does not commit the parties to the subscription of any legal document. The information and measurements are approximate and must be confirmed with the relevant documentation.